

BESLER NEGATRANS INSTRUCTIONS  
FOR 35MM MODEL, CAT. #8081 AND 120 MODEL, CAT. #8082

Congratulations on your purchase of the Beseler Negatrans. The Negatrans provides a revolutionary method of handling film in an enlarger. The carrier conveniently transports individual cut frames, strips and full rolls into and out of the enlarger without requiring the opening or repositioning of the negative stage.

The 35mm model incorporates adjustable format masks to permit selection between 35mm full frame and half frame operation.

The 120 model utilizes a glass pressure plate which is raised during film transportation to insure film flatness.

Adjustable film format masking blades permit selection between 2-1/4"x2-1/4" (6x6cm) and 2-1/4"x2-3/4" (6x7cm) operation. In addition, an optional accessory mask, Cat. #8092, permits 1-5/8"x2-1/4" (645) operation.

PREPARATION

The Negatrans carrier is designed to fit all models of Beseler enlargers; however, each model requires a different preparation. Refer to the instructions and diagram on the back page for this procedure.

INSERTING THE NEGATRANS INTO THE ENLARGER

The Negatrans is inserted into the negative stage of the enlarger in the same way as any other negative carrier. In the case of Printmakers, 67's and 23C's the carrier is fixed into position. In the 45's and CB7's a slight amount of rotation is possible.

The film can be inserted into the Negatrans and moved into projection position without removing the Negatrans from the enlarger.

NOTES

1. Due to the way film is handled in the Negatrans, a slightly smaller than normal film opening is required to hold the film. If you require maximum format coverage or flatness, we suggest you try a standard negative carrier.
2. Certain combinations of diffusion chambers or condenser light sources may not permit total coverage of the film format. If this occurs, switch to the next larger illumination source.
3. The actual transportation of film through the Negatrans is by means of a rubber drive belt contacting one edge of the film. Should this belt wear or break, it can easily be replaced. The replacement part can be ordered from Beseler or through your local Authorized Beseler Dealer.

35mm Replacement Drive Belt #562-34-05  
120 Replacement Drive Belt #562-34-09

#### OPERATION - 35mm MODEL

1. Trim the end of the film to produce a sharp, clean edge between sprocket holes. Do not cut through a sprocket hole, since a straight edge all the way across the film is required for smooth feeding.
2. Holding the film by the edge, place the end of the film (emulsion side down) on the film guide and push it toward the center of the Negatrans until the end engages the transmission belt (approximately 1" of the film, or six sprocket holes, passes under the top cover before the transmission belt takes hold).
3. Turn the film advance knob and the film will be transported into projection position. If the film is inserted in the right side, turn the knurled knob counterclockwise (looking down on the top of the Negatrans). If the film is inserted in the left side, the knob must be turned clockwise.

#### SPECIAL FEATURES - 35mm MODEL

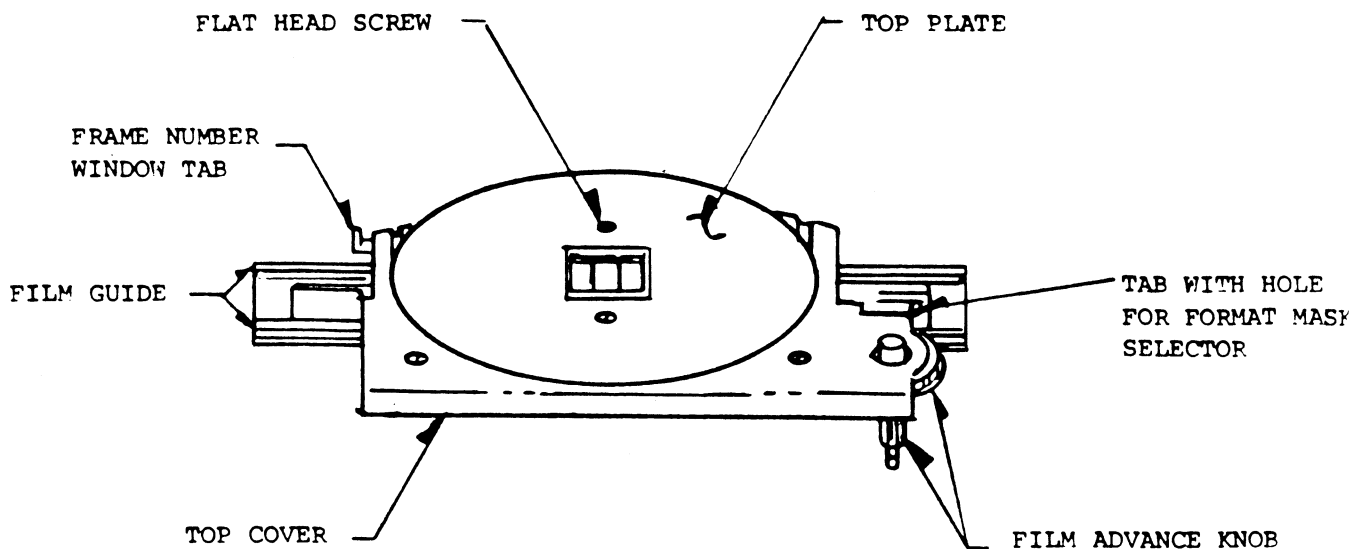
1. The Negatrans incorporates an adjustable format mask to permit full frame and half frame format operation. To select between formats, grip the format mask selector tab or insert a pointed object in the hole in the tab and slide the mask. When the tab is moved away from the center, the half frame mask will shift into position. Slide the tab towards the center for full frame projection.
  2. The frame number window tab controls the cover for a window through which the frame number can be projected. When the tab is pushed toward the center of the Negatrans, the window is open. To mask the aperture, pull the tab out.
- 

#### OPERATION - 120 MODEL

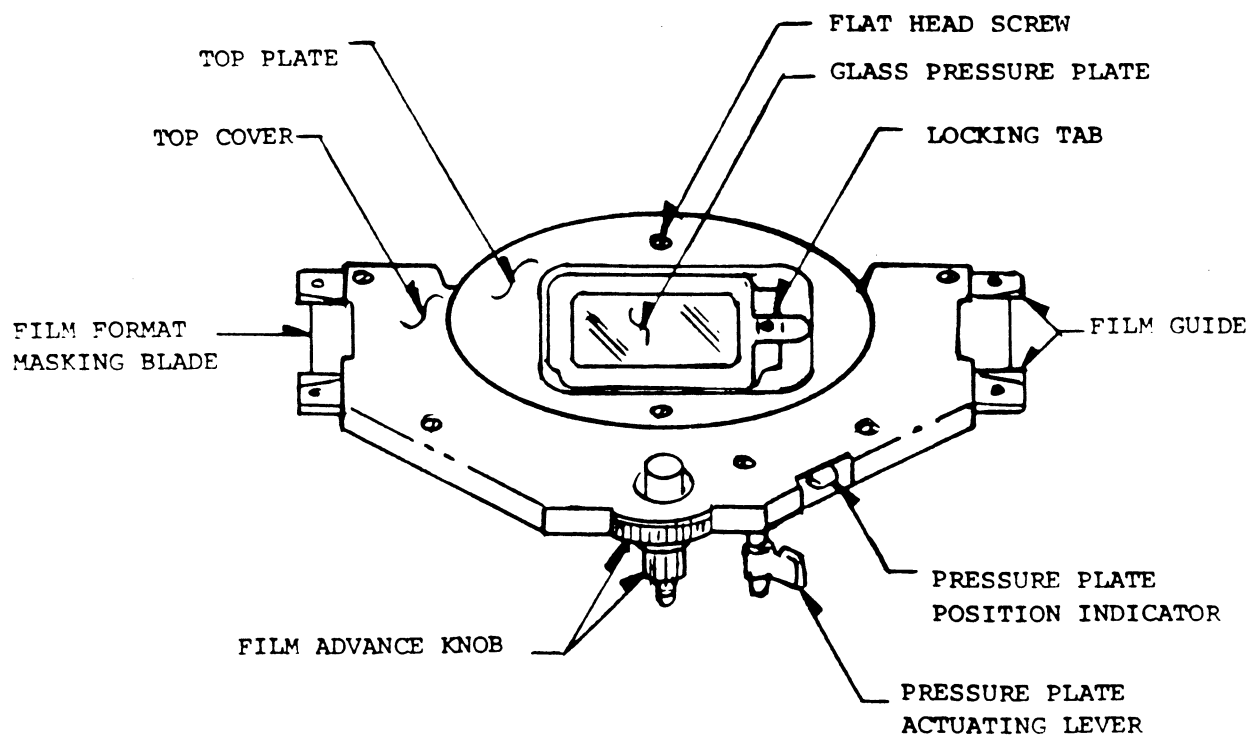
1. Trim the end of the film to produce a sharp, clean edge. A straight edge all the way across the film is required for smooth feeding.
2. Holding the film by the edge, place the end of the film (emulsion side down) on the film guide and push it toward the center of the Negatrans until the end engages the transmission belt (approximately 2" of the film passes under the top cover before the transmission belt takes hold).
3. Turn the pressure plate actuating lever clockwise to raise the glass pressure plate. When the pressure plate is raised, the pressure plate position indicator will project out of the carrier.
4. Turn the film advance knob and the film will be transported into projection position. If the film is inserted in the right side, turn the knurled knob counterclockwise (looking down on the top of the Negatrans). If the film is inserted in the left side, the knob must be turned clockwise. Once the film is positioned, lower the pressure plate. DO NOT ADVANCE FILM UNLESS THE PRESSURE PLATE IS RAISED.

#### SPECIAL FEATURES - 120 MODEL

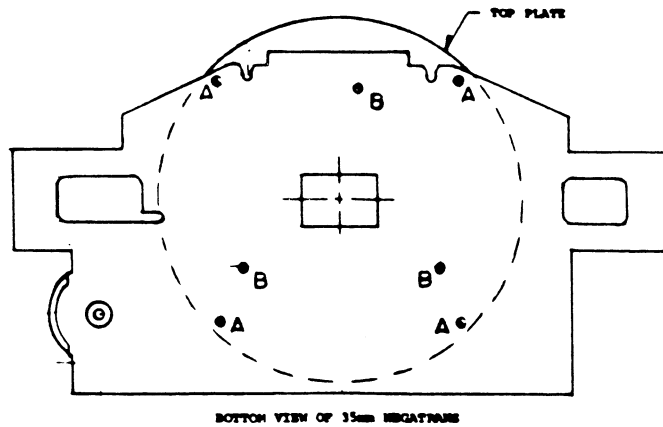
The Negatrans incorporates two adjustable format masking blades, one on either side. Slide these blades in to mask down for 2-1/4"x2-1/4" operation. Pull them out for 2-1/4"x2-3/4" work.



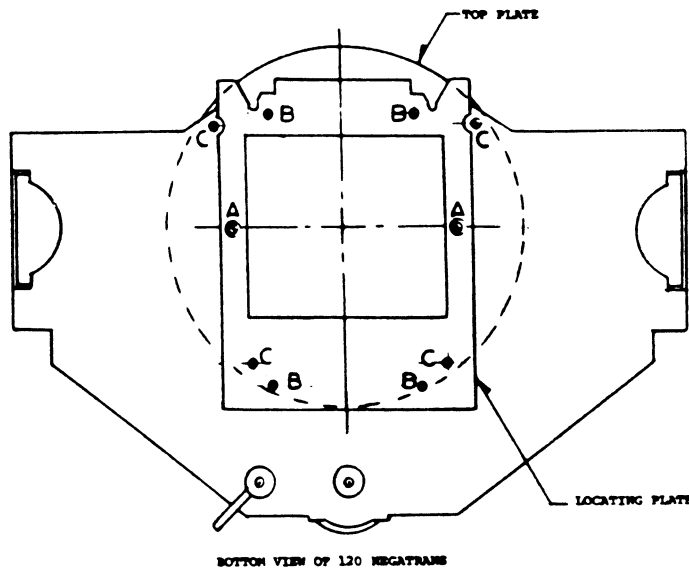
35mm NEGATRANS



120 NEGATRANS



1. FOR 45 SERIES ENLARGERS: Use as is with Top Plate in place.
2. FOR 23C SERIES ENLARGERS: a. Remove (2) Flat Head Screws and Top Plate. Insert screws back into Negatrans cover.  
b. Remove (4) Screws marked "A."
3. FOR PRINTMAKER AND 67 SERIES ENLARGERS: a. Remove (2) Flat Head Screws and Top Plate. Insert screws back into Negatrans cover.  
b. Remove (4) Screws marked "A."  
c. Remove (3) Screws marked "B."



1. FOR 45 SERIES ENLARGERS: a. Remove (4) Screws marked "B" and Locating Plate.  
b. Remove (2) Screws marked "A."
2. FOR 23C SERIES ENLARGERS: a. Remove (2) Flat Head Screws and Top Plate. Insert screws back into Negatrans Cover.  
b. Remove (4) Screws marked "C."  
c. Remove (4) Screws marked "B" and Locating Plate.
3. FOR PRINTMAKER AND 67 SERIES ENLARGERS: a. Remove (2) Flat Head Screws and Top Plate. Insert screws back into Negatrans Cover.  
b. Remove (4) Screws marked "C."
4. FOR ALL MODELS: a. The glass Pressure Plate must be installed after following procedure 1, 2 or 3 above.  
b. Set the plate with its left side (glass side down) on top of the two bright metal spring fingers, located on the left side of the picture format area. (DO NOT INSERT THE PLATE UNDER THESE FINGERS.) Push the plate firmly to the left and press the locking tab on the locking pin and slide the plate to the right to lock.  
c. The pressure plate may be removed by pushing it to the left using the locking tab. (See arrow on the Locking Tab.) This releases the locking pin and the plate may be removed by lifting up using the tab.